

MATENG

YZ SERIES

CATALOG

YZ SERIES

ROUND NEUTRAL FIBER CONNECTORS

PRODUCT INTRODUCTION

- Conform to GJB1919A
- With neutral bayonet locking, fast connection and separation can be realized
- Through the wall sealed connection structure, the connector core number up to 12 core
- Neutral structure design, regardless of male and female head, plug and socket can be arbitrarily connected
- The outer shell can choose stainless steel, aluminum alloy and polymer composite material three kinds
- The ceramic core and ceramic sleeve are used to realize fiber precision docking
- It is suitable for military communication, military computer system, nuclear power field, vehicle communication.

MAIN TECHNICAL INDEX

MECHANICAL PROPERTY

- Mechanical life :500 cycles of insertion and removal
- Tension resistance : $\geq 500\text{N}$ (main cable)
- Vibration: 10Hz ~ 500Hz, acceleration 980m/s^2
- Impact: 980m/s^2

ENVIRONMENTAL PERFORMANCE

- Temperature shock: $-40^{\circ}\text{C} \sim +80^{\circ}\text{C}$
- Protection class: IP67

OPTICAL PROPERTY

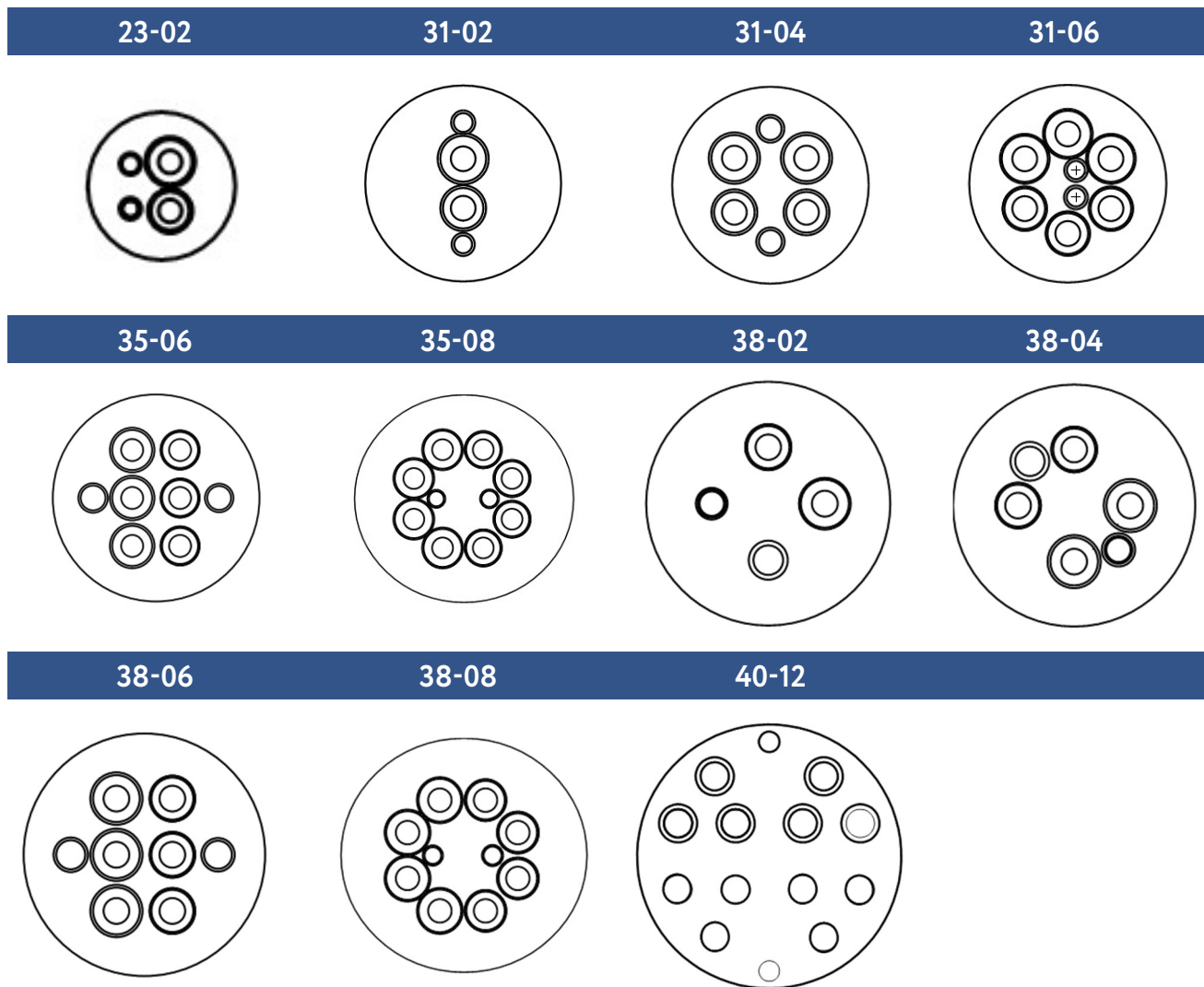
- Insertion loss: $\leq 0.8\text{dB}$ (2core~4core)
 $\leq 1\text{dB}$ (6core~12core)



PART NUMBER

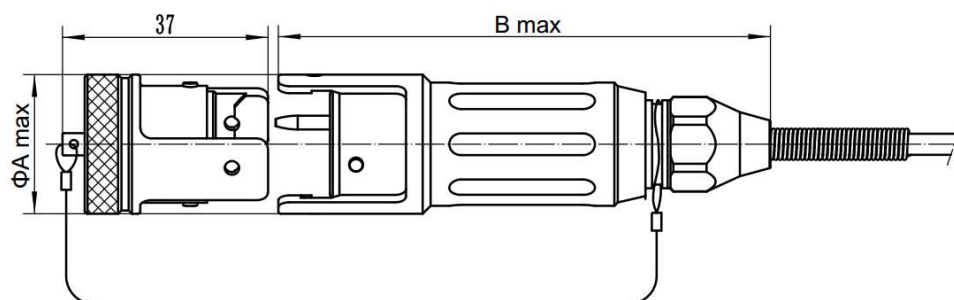
| YZ | 23 | K1 | 02 | T | S |
|---|----|----|----|---|--|
| Connector series | | | | | |
| Housing number 23, 31, 35, 38 (Plastic case), 40 | | | | | |
| Material coating K1-Plastic case Aluminum alloy anodized black K2-K3-Passivation of stainless steel | | | | | |
| Contact arrangement 01—Single core 02—two core 03—tree core 04—four core 06—six core 08—eight core 12—twelve core | | | | | |
| | | | | Connector type T—plug Z—socket | Optical fiber transmission mode S—Single mode S—Single mode 9/125 M—multimode 62.5/125 MIV-OM3 50/125 |

CONTACT ARRANGEMENT



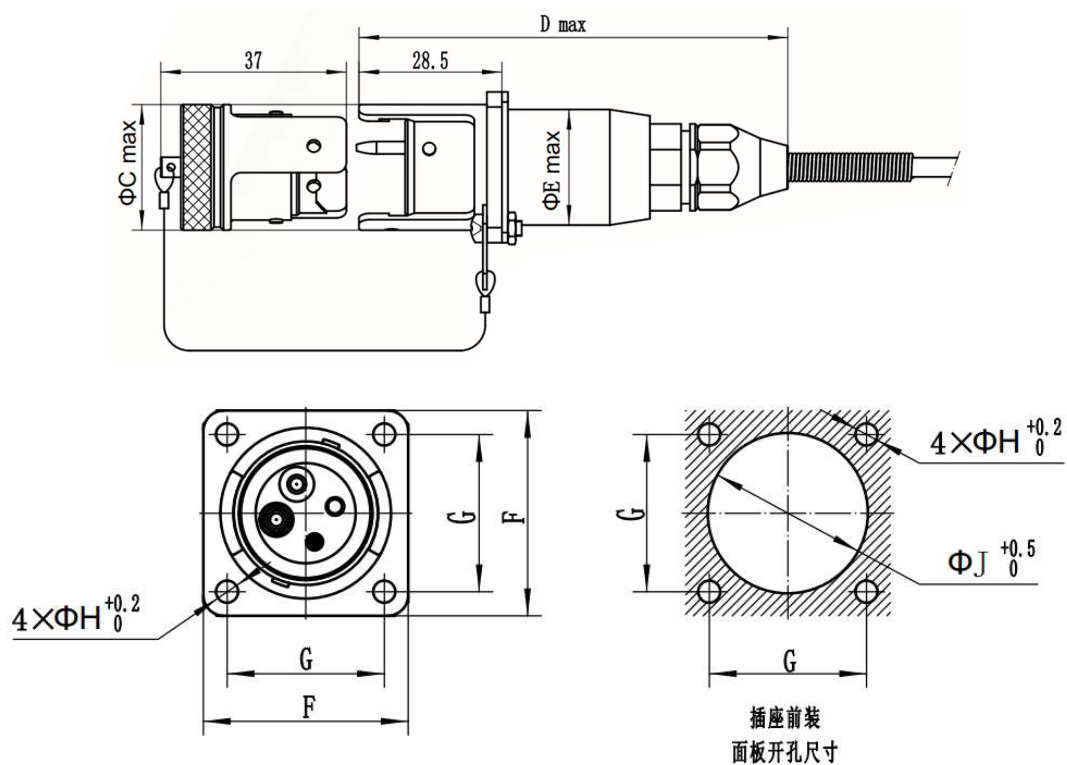
OVERALL DIMENSION

PLUG DIMENSION



| Housing number | 23 | 31 | 35 | 38 | 40 |
|--------------------------------|----|-----|-----|-----|-----|
| Maximum outside diameter A max | 25 | 32 | 35 | 38 | 40 |
| Maximum length B max | 90 | 111 | 111 | 103 | 111 |

SOCKET DIMENSIONS



| Housing number | C max | D max | E max | F | G | H | J min |
|----------------|----------|----------|----------|------|------|-----|----------|
| 23 | 25 | 59.5 | 23 | 30 | 23 | 3.3 | 23.5 |
| 31 | 32 | 58 | 25 | 34.1 | 26.4 | 3.5 | 25.5 |
| 35 | 35 | 59 | 28 | 39 | 29.2 | 3.5 | 28.5 |
| 38 | 38 | 72 | 31 | 44.7 | 34.5 | 4.5 | 31.5 |
| 40 | 40 | 58 | 34 | 43 | 35.5 | 3.5 | 34.5 |



MATENG

SHENZHEN MATENG INTERCONNECTION TECHNOLOGY CO., LTD.

[HTTPS://MATENG.TECH/](https://mateng.tech/)